

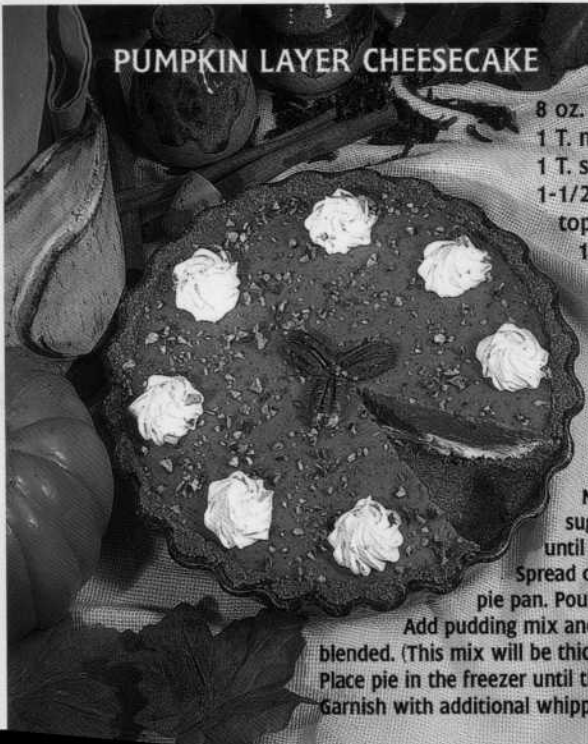
PUMPKIN LAYER CHEESECAKE

- 8 oz. soft cream cheese
- 1 T. milk
- 1 T. sugar
- 1-1/2 cups whipped topping, thawed
- 1 ready-made graham cracker pie crust
- 1 cup cold milk
- 2 pkgs. vanilla instant pie filling
- 16 oz. can of pumpkin
- 1 tsp. cinnamon
- 1/2 tsp. ground ginger
- 1/4 tsp. ground cloves

Mix cream cheese, 1 Tbsp milk and sugar in a large bowl with a wire whisk until smooth. Stir in whipped topping.

Spread cream cheese on the bottom of the pie pan. Pour 1 cup milk into large mixing bowl.

Add pudding mix and beat with a wire whisk until blended. (This mix will be thick.) Stir in the pumpkin and spices. Place pie in the freezer until thoroughly chilled but do not freeze. Garnish with additional whipped topping if desired, and serve.





Yvonne Garrett

Mark Sudduth Realty

608 State Street

Augusta, KS 67010

Office: (316)775-7717

Direct: (316)640-0416

Thanksgiving Recipe for a Smile

This recipe is so delicious and satisfying, it'll bring a smile to your lips. When it's time for real estate, I've got the time-proven strategies and up-to-the minute knowledge to stir up pleasing results. Call me! You'll be glad you did.



yvonne@garrett-squared.com
www.SudduthRealty.com